



We transform steel.
And the steel transforms you.



INNOVATION AND TECHNOLOGY

with quality and performance
for all markets.

Tuper innovates continuously and invests in new technologies to add even more value to its products, allowing customers to **reduce productive chain steps, resulting in agility and efficiency.**

Pipe galvanizing

Hot-dip galvanizing and air-blow finish.

Pipe painting

Powder paint, polyester, epoxy or hybrid, in any color.

Pipe coating

Epoxy or three layer polyethylene. Guarantees corrosion and mechanical protection.

Tube drawing

Meets strict geometric and dimensional tolerances.

Laser cutting

2D and 3D technology for high-quality cutting.

Chemical treatment

Surface preparation for further processing.

Heat treatment

Control of metallurgy and mechanical properties.

Plasma cutting and oxyacetylene

Tubular components in a wide variety of configurations.

Tube bending

CNC technology for high-precision bending.

Stamping

Mechanical forming of sheets and tubes.

End forming

Expansion, reduction or geometric change of tube ends.

Cutting, brushing and washing parts

Simultaneous multiple cuts with face edge smoothing.

Metrology

Geometric and dimensional control center.

Inspection

Macrography, eddy current, UT, flattening, expanding, hydrotest, visual exam, etc.

Precision machining

Lengths to tight tolerances and ends with perfect edges.



Tuper

Tuper is capable of transforming steel into solutions for countless applications.

R\$ 3,3 BI

REVENUE 2022

2

INDUSTRIAL PLANTS

20+

DISTRIBUTION CENTERS

125

THOUSAND SQ M

OF BUILT AREA

826

THOUSAND TONS

STEEL TRANSFORMATION CAPACITY

Consolidated as one of the **largest steel processors in Brazil**, Tuper follows the market evolution through its wide range of products.

In **more than 50 years of activities**, the company achieves a high standard of quality and operations, and this structure allows Tuper to provide solutions for oil & gas, construction, industry in general, automotive, agribusiness and distribution, participating in important projects for the country's development.

With a modern industrial park and important production capacity, **Tuper complies with the most stringent national and international standards** always committed to the customers.



Get inspired by Tuper



SOLUTIONS

Guaranteed quality in products and services.

Tuper is present in various segments offering standard and innovative **solutions** that are part of the everyday life for millions of people in the cities and in the countryside.

Structural and industrial tubes



Carbon steel HFW tubes.
OD 5/8" to 13-3/8";
Round or rectangular.

Conduction pipes



Black, galvanized or painted.
At various grades and end finishing types.

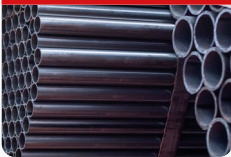
Hot-dip galvanized pipes



Galvanized rigid conduits



Scaffolding tubes



According to NR18 specifications.

Pipes for boiler, condenser and heat exchangers



ASTM A178 and ASTM A214.

Drawn tubes



Line pipe (API 5L)



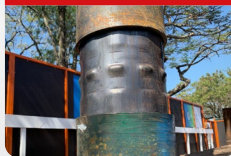
OD 5-9/16" to 12-3/4";
Grades up to X70 PSL2.

Casing (API 5CT)



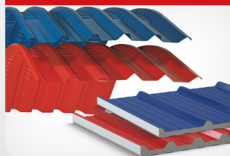
OD 5-1/2" to 13-3/8".
Grade J55 and J55 upg to L80/P110.

Steel pipe piles with quick connection



ASTM A252 Grade 3.

Steel panels and roofing



Traditional, decorative,
thermoacoustic and others.

Structural sections



MARKET SEGMENTS

Construction



Industry



Oil and Gas



Agribusiness



Automotive



Distribution



Composite ribbed slabs



Scaffolding



Multidirectional and facade.

Slitted skelps

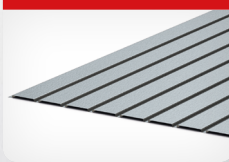


Carbon steel props



Adjustable, reusable and eco-friendly.

Wainscot



Wainscot with zinc or Galvalume® coating.

Exhaust systems (OEM / aftermarket)



Exhaust systems, catalytic converters and automotive parts.

PV Solar structures and tracker parts



Customized components and systems for photovoltaic structures.

Automotive parts



Special tubes and components for various applications, such as: suspension axles, shock absorbers, jackets and steering columns, among others.

Tuper



ENGINEERING

Dedicated technical staff working with the customer.

Tuper knows that **excellence and cutting-edge technology are essential** to reach success. For this reason, all Units of the Group are continuously **improving their competences.**

In addition, the company has a **solid structure to develop processes and products**, with **laboratories equipped to carry out chemical analysis, mechanical and metallurgical tests**, in line with the best global concepts.

QUALITY

The excellence of Tuper products and services

is guaranteed by process monitoring systems and quality inspections carried out at several stages of the manufacturing chain.

See the main certifications of the different company units below:

ISO 9001

API Q1

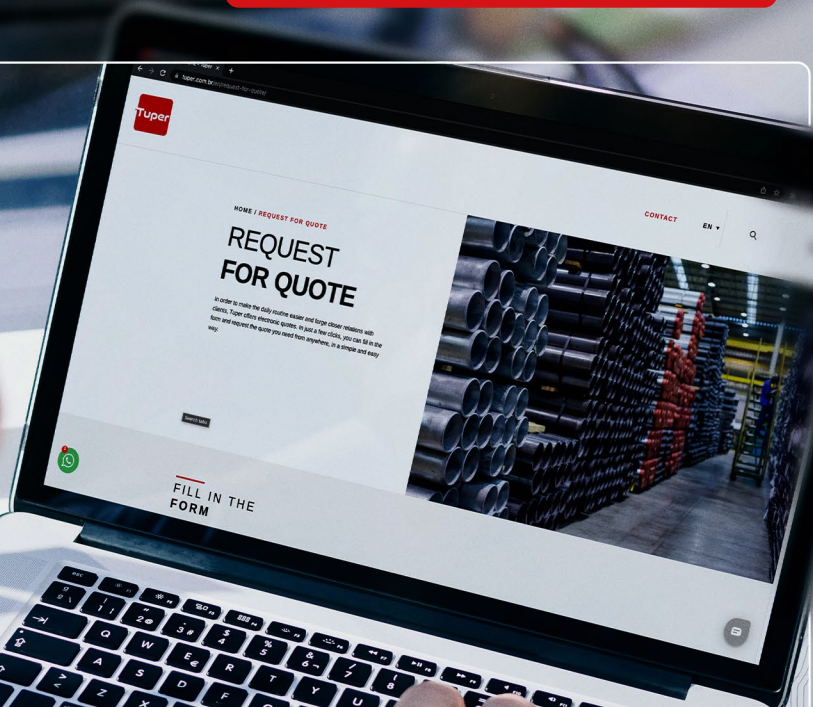
IATF 16949

ISO 14001

Get your online quote.

Visit our website and find the
best steel solutions for your project.

www.tuper.com.br/en/request-for-quote/



Follow the news,
exclusive content and
download our catalogs.

We transform steel.
And the steel transforms you.





TUPER S.A.

1441 Prefeito Ornith Bollmann Av.

ZIP CODE 89282-427 • São Bento do Sul • SC • Brazil

+55 47 3631 5000

tuper@tuper.com.br

tuper.com.br



/grupotuper